

MILLDALE SHOWHOME

SINGLE STOREY RANGE  
TORONTO 178

3 bedrooms | 2 living | 2 bathrooms | alfresco living | 2 car garage

House and Land, Lot 49, Maurice Road, Milldale

\$1,114,480



FOR SALE WITH LEASE-BACK UP TO  
18 MONTHS WITH 6.5% RETURN



Madison Park Homes can be altered to suit your choice of facades, individual lifestyle and budget.



# SINGLE STOREY RANGE

# TORONTO 178

## SHOW HOME

## TORONTO 178

Lot 49

Maurice Road, Milldale

178 sqm

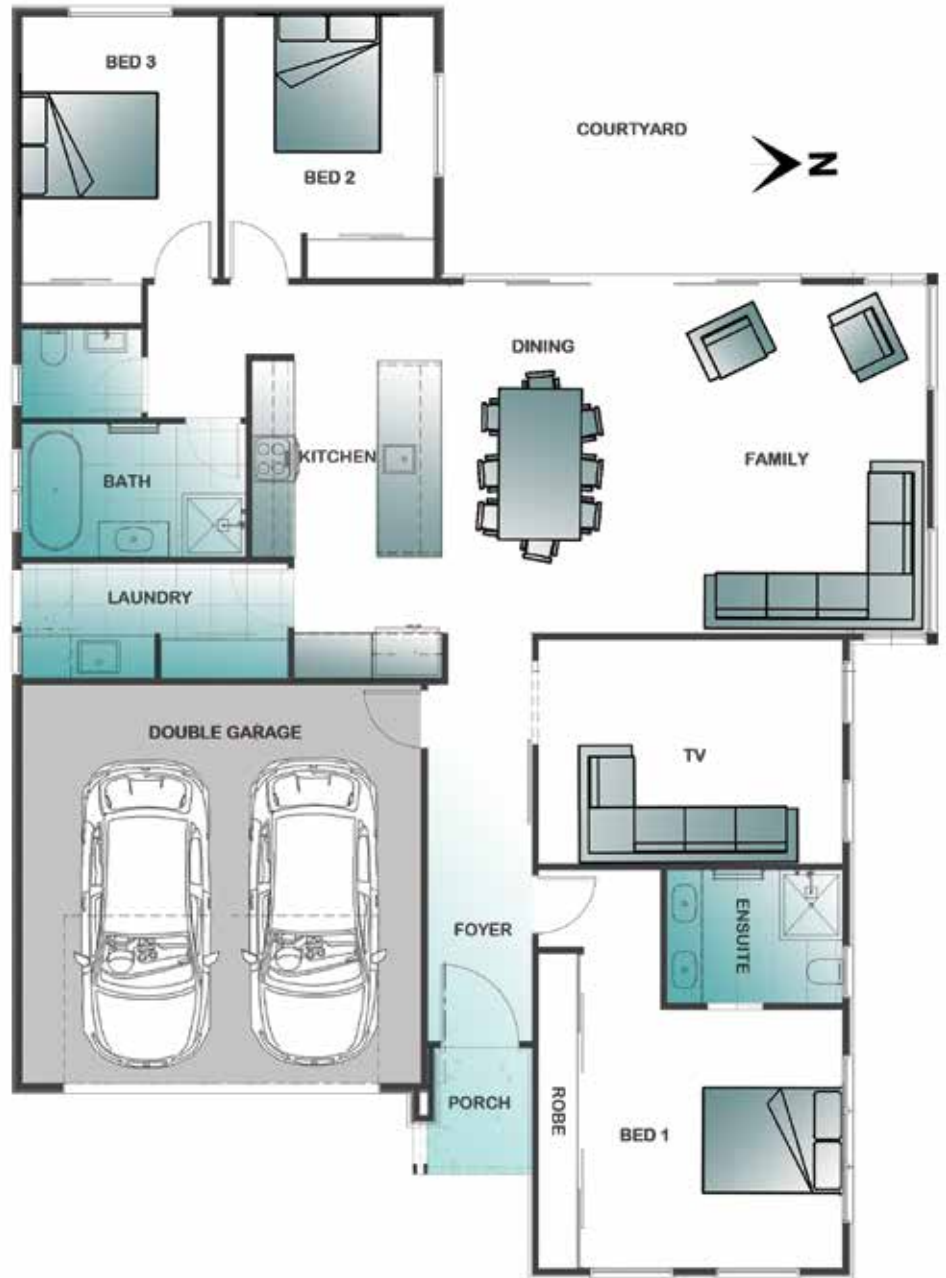


3 bedrooms | 2 living | 2 bathrooms  
alfresco living | 2 car garage

## NEVER ORDINARY

### OUR STUNNING NEW SHOW HOME FEATURES

- High quality under tile bathroom heating
- Fully tiled showers
- Raked ceilings
- Melteca fitted robes to all bedrooms
- Garage carpet
- Abodo and cedar claddings
- Electrical upgrade and low level lighting
- Colour matched downpipes
- Luxurious carpet in a wide choice of fashion colours
- Longrun roofing
- High 2.72 m ceilings
- 2.4 m high doors
- Barn-style sliding doors
- Caesar Stone kitchen bench tops



### BUILD GUARANTEE FOR PEACE OF MIND AND DESIGN EXCELLENCE

We give you complete peace of mind at every step and make the journey as stress-free as possible. Sit back and enjoy the entire Madison Park Homes building experience.

**GUARANTEED BUILD TIME**

LENGTH 18 060

WIDTH 13 100

**MADISON PARK  
HOMES**

NEVER ORDINARY

0800 696 234 | [www.madisonparkhomes.co.nz](http://www.madisonparkhomes.co.nz)

Madison Park Homes Limited, 39A Arrenway Drive, Rosedale, Albany, Auckland, New Zealand, Email [info@madisonpark.co.nz](mailto:info@madisonpark.co.nz)

Madison Park Homes can be mirror imaged to suit the site. Plans, sizes and specifications may vary and are subject to council building regulations. Images are indicative only. Plan copyright is exclusive to Madison Park Homes Limited.