

HOUSE & LAND

FIXED PRICE \$1,084,000



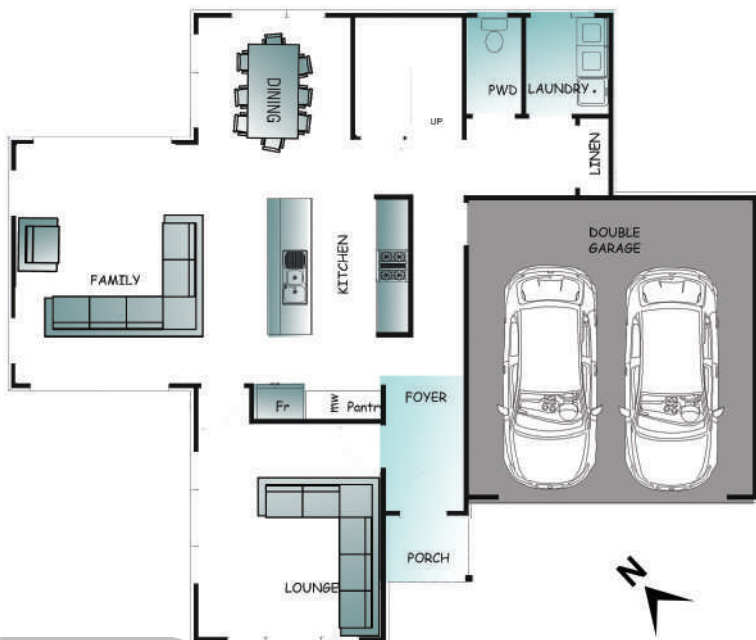
LOT 259
MANUEL ROAD
SILVERDALE

Land 520 sqm House 223 sqm

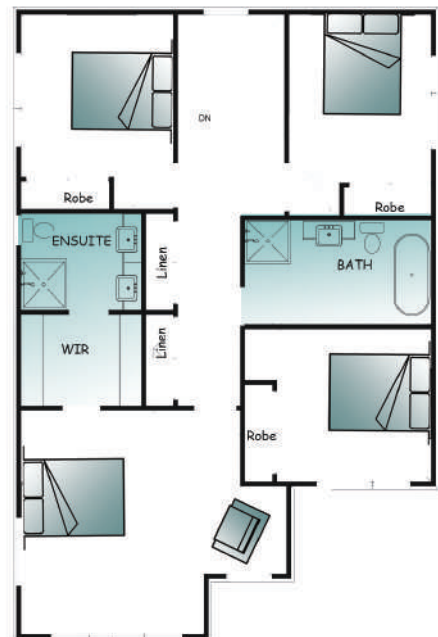
4 | 2 | 2.5 | 2

4 bedrooms | 2 lounges | 2.5 bathrooms
2 garages

Build your dream home with Madison Park Homes on this almost flat elevated section in Manuel Road. Choose from our exciting new plan range or work with one of our preferred architects to get the house of your dreams at a budget you are happy with.



GROUND FLOOR



FIRST FLOOR

TALK TO US ABOUT BUILDING THIS HOME ON YOUR OWN SECTION

LENGTH 123.7

WIDTH 146.9

0800 696 234 | www.madisonparkhomes.co.nz

Madison Park Homes can be mirror imaged to suit the site. Plans, sizes and specifications may vary and are subject to council building regulations. Images are indicative only. Copyright to these plans is exclusive to Madison Park Homes Limited.

**MADISON PARK
HOMES**
NEVER ORDINARY

Madison Park Homes Limited, 39A Arrenway Drive, Rosedale, Albany, Auckland, New Zealand, Email info@madisonpark.co.nz